

ANNUAL REPORT 2014

THE CHISHOLM TRAIL 100 CLUB, INC.



We serve those who serve us.

TABLE OF CONTENTS

Executive Summary	4
Company Description	4
Historical Background	4
Letter from President	5
Mission Statement	6
Award Winners	7
Meet Our Speaker	8
Board of Directors.....	9-12
Management.....	9
Meet the Class of 2014 Directors.....	13
Membership Information	14
Lifetime and Corporate Members	15
Clay Shoot Overview.....	16-17
Income and Expense.....	18
Assets and Liabilities.....	19

FOR MORE INFORMATION

For more information and the latest news from the Chisholm Trail 100 Club, visit our website – CT100.org. At our website you can:

- Make changes to your membership, including new memberships, renewals, membership type, address changes and more
- Communicate with other members and comment on CT100 activities on our forums
- Sign up for upcoming events
- View photos and videos
- Have access to all CT100 Club documents including tax forms, meeting minutes, and more!

FIND US ON FACEBOOK

Effortlessly stay updated with all the latest CT100 Club news at Facebook.com/chisholm100club



CONTACT US

Executive Director – niki.passmore@ct100.org
1-866-888-3085 ext 107

EXECUTIVE SUMMARY

The Chisholm Trail 100 Club, Inc. is a growing network of people working together to provide financial support and encouragement to survivors of eligible law enforcement officers, firefighters, correctional officers and emergency medical service personnel who are killed or seriously injured in the line of duty within our area of operation, Johnson County, Texas. The Club is a citizen sponsored not-for-profit organization created to support the families of First Responder personnel and is funded only by its member dues (e.g. Annual memberships, Lifetime Memberships, etc.) and general donations from the public.

When tragedy strikes the effects can be both swift and devastating. The 100 Club recognizes the need to respond immediately with personal support and understanding. Whatever the need, be it financial, advisory, or moral support, the 100 Club will be there to ease the pain of the family of a firefighter, law enforcement officer, correctional officer or EMS (Emergency Medical Service) responder injured or killed in the line of duty.

Historical Background

The idea of the first 100 Club began in Detroit, Michigan, in 1952, after a local businessman, William Packer, was moved to action when a police officer was killed in the line of duty. Packer, a friend of the Police Commissioner, wrote to 100 of his friends, encouraging them to donate to a fund for the fallen officer's family to get them through the emotionally and financially trying time. The response was 100% positive.

Packer and the Commissioner later met with the expectant widow, reviewed her finances, arranged to pay off the mortgage on their recently purchased home, pay all the bills, set up an education account for the yet unborn child and deposited \$7,000 in the widow's checking account.

These caring and unselfish actions became the charter for what is now nationally known as "The 100 Club". Over the last 50 years, 100 clubs have been started in cities in every state of the nation and members now number into the tens of thousands.

The Chisholm Trail 100 Club is the newest member to join the other Texas 100 Clubs: The 100 Club, The 100 Club of Southeast Texas and the 100 Club of Central Texas.

As clubs grew, their missions expanded and changed. Many clubs have elected to include Fire Fighters and EMS Personnel; some have even begun providing stipends to qualified agencies to purchase equipment to enhance the safety of their personnel.

The 100 Club Members realize that money can never make up for the loss of or disability of a loved one, but it can be helpful in covering immediate expenses. In addition, the 100 Club has a committee of experts, a Professional Advisory Team including members of the Fallen Officers' Agency, CPAs, attorneys, trust officers, brokers, financial consultants and employee benefits consultants. This team, at the survivor's request, will advise and counsel the family in a wide range of areas without cost or obligation.

If you are a civic minded individual and support the 100 Club mission, there is a place for you among this group of extraordinary people. Membership in the 100 Club is open to everyone and provides minimum effort and maximum satisfaction. We simply want to help those who are always there to protect us.

A LETTER FROM OUR PRESIDENT

July 18, 2014

To Our Club Members:

We are happy to be closing out our fourth year of the Chisholm Trail 100 Club, a year that we were blessed without any major injuries to our First Responders. Once again, I'm happy to report that the Club continues to make significant steps in establishing itself as a credible, viable and responsive organization. Your Board of Directors, a dedicated group of volunteers, continue to lead the Club with well thought out plans to keep the Club financially sound to be able to fulfill the mission of being able to stand in the gap at the time our First Responder's need help most.

Our Membership continues to understand the need and we appreciate all that is done to support those who are there for us whenever crisis is upon us.

I referred to your Board of Directors as your leaders, but in reality, they are the cadre of workers that get our projects done. They ask for nothing in return, other than knowing that they are part of solution to a problem no one wants to deal with.

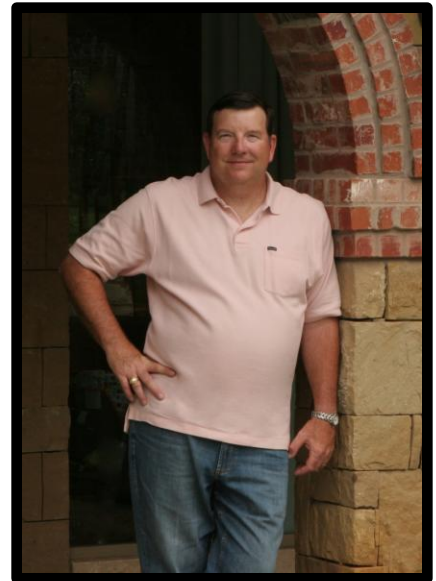
I'm happy to report that The Club has accomplished some new milestones:

- The Club has expanded the coverage of the insurance policy to include over 1300 First Responders working in Johnson County
- We have quadrupled our Endowment Fund from last year
- The Club staged a extremely well organized Sporting Clay Competition for the 3rd year
- We updated our record keeping and membership management software to be better organized

Last year I encouraged you to help get the word out about the Club and its mission. You responded and we are now becoming better known throughout Johnson County. There is still a lot to do in this area but we are getting there. Our membership now stands at 665, an increase from 519 from last year. Please keep talking about your Club. Our mission is worthy and important.

I've thoroughly enjoyed serving as your Club's President for the past two years. As I hand the gavel off to Keith Kelly, I want to say thank you to the Board and to our very dedicated Executive Director, Niki Passmore. She makes the job much easier for our volunteers and I appreciate her loyalty to the Club. Please continue to Support Chisholm Trail 100 Club in its efforts to provide resources and security to our heroes.

Sincerely,
Bruce Basden



MISSION STATEMENT

Chisholm Trail 100 Club, Inc. is a growing network of people working together to provide financial support and encouragement to dependents of law enforcement officers and firefighters who are killed or injured in the line of duty in the following manner:

1. To provide financial assistance to dependents of law enforcement officers and firefighters killed in the course of a law enforcement or firefighting activity.
2. To provide financial assistance to a law enforcement officer or firefighter that incurs a serious bodily injury or becomes disabled in the course of a law enforcement or firefighting activity.
3. To provide scholarships to approved applicants for educational purposes.

MEET OUR AWARD WINNERS

LIFETIME ACHIEVEMENT AWARD – RANDAL GOODWIN

CHIEF OF SUPPORT SERVICES FOR JOHNSON COUNTY EMERGENCY SUPPORT DISTRICT

Randal Goodwin has been an active member of the Johnson County community for over 20 years. During the 1980s, Mr. Goodwin was an active Firefighter, serving as a lieutenant and EMT with the Briaroaks Volunteer Fire Department. It was during this time, while trying to assist two injured fire fighters, that Goodwin was severely injured in the line of duty. He was struck with 69,000 volts of electricity when a downed power line arced in his direction. The arc struck him just above his right eye, and exited from his feet. He was left with second and third degree burns to 87% of his body, blindness in his right eye, legally blind in his left eye and both feet amputated just above the ankle.



Despite the serious injuries, Goodwin still has a terrific passion for rescue work. In 1991 he founded the Emergency Support Service (www.herosupporter.com), an organization that fulfills a very important, but often overlooked, role. Today he and his wife, Grace head this organization, providing support to 14 separate departments with some 20 stations.

Goodwin volunteers with Camp *I Thonka Chi*, a camp for children with severe burn injuries, performing the roles of counselor and mentor. Because of his history, he looks forward to attending this camp every year and sharing his story.

Goodwin and fellow fire fighter, Jerry Pena, founded Team Fenix, an organization dedicated to collecting and distributing used firefighting equipment to communities in need in Mexico. After some time, this mission evolved, and now Team Fenix also brings teams of local firefighters to Mexican communities to administer free rescue training, averaging 500-800 attendees.

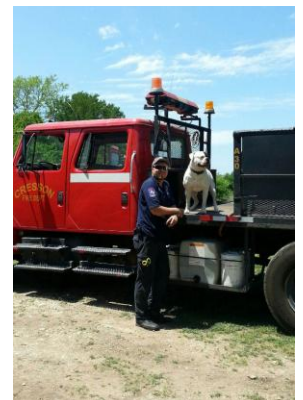
We are honored to have a person like Randal Goodwin working within our community, this year we celebrate his commitment to fire and rescue services.

CHISHOLM TRAIL 100 CLUB AWARD – DANNY COOK

CRESSON VOLUNTEER FIRE DEPARTMENT

Danny Cook, a volunteer at the Cresson Fire Department, was born in 1982 in Fort Worth. At 17, he joined the US Navy, serving honorably from 2000-2005 as a Tactical Helicopter Combat Search and Rescue Swimmer.

Mr. Cook is being honored for a particular, off-duty, rescue. On Nov. 12, 2013, while driving through Benbrook, Texas Cook observed a pickup truck swerve off of the highway, careen through a parking lot, and plunge into a drainage ditch. Danny, sensing something was wrong with the driver, followed the vehicle. He climbed onto the truck, broke through a window, and determined the driver, postal worker, Tim Grubb, was pulseless. Danny removed Grubb from the vehicle and began CPR in the drainage ditch. Minutes later, City of Benbrook fire fighters and police were on the scene. All agree that if Cook had not performed the actions he did, Tim Grubb would not be where he is today, back at home with his family.



MEET OUR SPEAKER – JOHN CALANDRO III

This year's speaker, John Calandro III, has been a staunch supporter of the Chisholm Trail 100 Club since its inception. Calandro, a financial advisor for Merrill Lynch and owner and operator of Clay Shooter's Supply, is himself a 100 Club beneficiary. Calandro was born and raised in Detroit, Michigan, where the concept of 100 Clubs were formed.

His father was a police officer of Detroit; he was killed in the line of duty in 1963 when a car ran a red light and struck his motorcycle. The 100 Club of Detroit stepped in to care for Officer Calandro's wife and three children (all under 5 years old). Because of their generosity, John, the eldest son, was the first person in his family for generations to be a college graduate. He credits his success today to the care and financial aid of 100 Clubs.




His business, Clay Shooter's Supply, has been a sponsor of our annual clay shoot fundraiser for three years running. Each year he increases the amount of his support, most recently donating 70 custom-made earplugs for lucky door prize winners.



Because of his experiences with 100 Clubs, he is a great storyteller of the effect organizations like the Chisholm Trail 100 Club can have on the families of our First Responders. We are proud and honored to host him as our guest speaker.





BOARD OF DIRECTORS

	<p>Bruce Basden</p> <p><i>President</i></p> <p><i>Executive Committee</i></p> <p><i>Basden Steel</i></p>		<p>Niki Passmore</p> <p><i>Executive Director</i></p> <p><i>Executive Committee</i></p> <p><i>Clay Shoot Committee</i></p> <p><i>Disbursements Committee</i></p> <p><i>Marketing Committee</i></p>
	<p>Keith Kelly</p> <p><i>Vice President</i></p> <p><i>Executive Committee</i></p> <p><i>Clay Shoot Committee</i></p> <p><i>KMP Graphics</i></p>		<p>Jerry Payne</p> <p><i>Past President</i></p> <p><i>Executive Committee</i></p> <p><i>Colonial Savings Bank</i></p>
	<p>Steve Ramey</p> <p><i>Marketing Committee</i></p> <p><i>Executive Committee</i></p> <p><i>Clay Shoot Committee</i></p> <p><i>Hoyt Communications</i></p>		<p>Kenny Howell</p> <p><i>Executive Committee</i></p> <p><i>Clay Shoot Committee</i></p> <p><i>Johnson County Commissioner</i></p>

	<p>Steve Davis</p> <p><i>Treasurer</i></p> <p><i>American National Bank</i></p>		<p>Jerry Pritchard</p> <p><i>Secretary</i></p> <p><i>Pritchard Insurance</i></p>
	<p>David Layman</p> <p><i>Disbursements Director</i></p> <p><i>Edward Jones</i></p>		<p>Bonnie Davis</p> <p><i>Director Clay Shoot Committee</i></p> <p><i>Vann/Elli, Inc.</i></p>
	<p>Lisa Wester</p> <p><i>Director</i></p> <p><i>Pinnacle Bank</i></p>		<p>Byron Black</p> <p><i>Director</i></p> <p><i>Retired Mayor of Burleson</i></p>
	<p>David Barkley</p> <p><i>Director</i></p> <p><i>Johnson County Attorney's Office</i></p>		<p>Robert Russell</p> <p><i>Director</i></p> <p><i>Financial Tax & Associates</i></p>

	<p>Jerry Stringer</p> <p><i>Director Clay Shoot Committee</i></p> <p><i>Johnson County Commissioner</i></p>		<p>Mike Erinakes</p> <p><i>Director Clay Shoot Committee Disbursements Committee</i></p> <p><i>MAAD H Ranch</i></p>
	<p>Justin Bond</p> <p><i>Director Marketing Committee</i></p> <p><i>City of Burleson</i></p>		<p>Melissa Zaborowski</p> <p><i>Director Clay Shoot Committee</i></p> <p><i>Johnson County</i></p>
	<p>Brian Porter</p> <p><i>Director Marketing Committee</i></p> <p><i>The Star Group</i></p>		<p>Stu Madison</p> <p><i>Provisional Director</i></p> <p><i>Johnson County Attorney's Office</i></p>
	<p>Justin Hewlett</p> <p><i>Provisional Director</i></p> <p><i>Hewlett Office Systems</i></p>		<p>Mike Peacock</p> <p><i>Provisional Director Clay Shoot Committee</i></p> <p><i>Assistant City Manager City of Joshua</i></p>

	<p>Merle Breitenstein</p> <p><i>Provisional Director</i></p> <p><i>Former Mayor of Joshua</i></p>		<p>Lora Johnson</p> <p><i>Provisional Director</i></p> <p><i>KMP Graphics and Silpada Jewelry</i></p>
	<p>Clint Ishmael</p> <p><i>Board Advisor</i></p> <p><i>Cleburne Fire Chief</i></p>		<p>Bob Alford</p> <p><i>Board Advisor</i></p> <p><i>Johnson County Sheriff</i></p>

MEET OUR NEW DIRECTORS – CLASS OF 2014

This year we vote in our new class of Directors. We are lucky to have five fantastic candidates. All candidates have already served an entire year as provisional members of the Chisholm Trail 100 Club Board of Directors, proving themselves to be valuable assets.



STU MADISON

Stu is a member of the prosecuting attorneys team for Johnson County for 19 years. He also served for five years on the Cleburne School Board, including serving as President. He is married with two children, a son and a daughter. They reside in Cleburne with their two Labradors.



JUSTIN HEWLETT

Justin Hewlett is the owner and operator of Hewlett Office Systems in Cleburne, as well as the owner and operator of Bright Beginnings Christian Learning Center also in Cleburne. He graduated from Texas A&M University in 1981. He has also served two terms with the Cleburne ISD School Board and as Cleburne Mayor from 2010-2012. He and his wife Sydney reside in Cleburne, they have four grown children and two granddaughters.



LORA JOHNSON

Lora has been an independent Representative for Silpada Jewelry for eight years as well as an employee for KMP Graphics in Burleson. She chose the CT100 Club because I come from a service oriented family and the philosophy of protecting the ones that protect us, hits close to home and pulled at my heartstrings.



MERLE BREITENSTEIN

Merle and his wife, April, have lived in Joshua since 1983. He had a lengthy career with Motorola, retiring from the position of Lead Engineer after 27 years with the company. He has also served in local politics as a City Councilman and Mayor for Joshua, Texas since 1979.



MIKE PEACOCK

Mike currently serves as Assistant Director for the City of Joshua, as he has for the past six years. He and his wife, Michelle, have been married for 16 years and have 4 children and 4 grandchildren. Mike enjoys target shooting and fishing in his spare time.

MEMBERSHIP HIGHLIGHTS

Our fourth year was filled with many successes, among them reaching our membership goals set forth at last year's Annual Meeting of 600 members, though we still have not reached our ultimate goal of 1% of Johnson County.

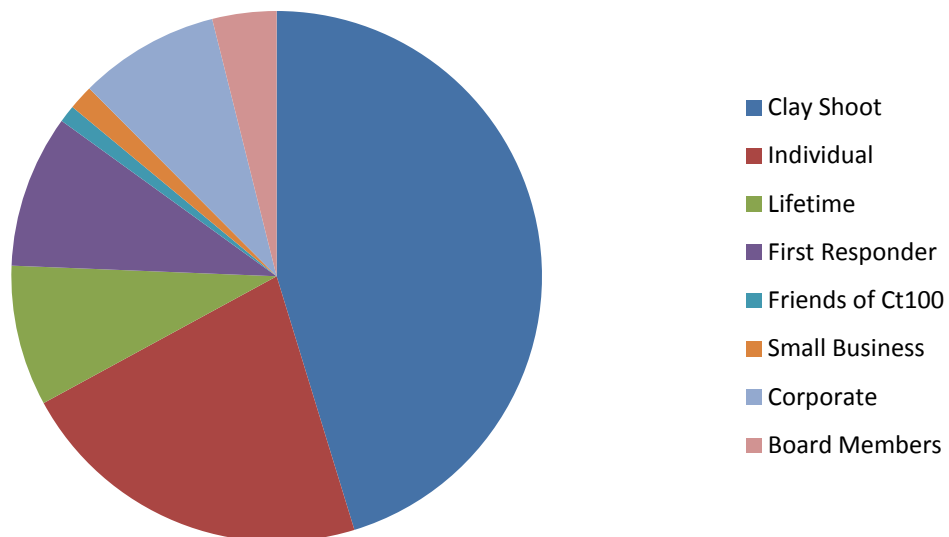
Our current membership is at 665 members

Clay Shoot Members	(w/entry)	301
Individual Memberships	(\$100)	145
Lifetime Memberships	(\$1000)	57
First Responder Members	(\$50)	62
Friends of Ct100 Members	(\$250)	7
Small Business Members	(\$150)	10
Corporate Members	(\$1000)	57
Board Members	(varies)	26

Annual Cost of Insurance Policies - \$38,000

CURRENT MEMBERSHIP BREAKDOWN

Membership Type



CORPORATE MEMBERS

AG Insurance Agency, Inc.
Alpha Omega Pest Control
Atmos Energy
Awards By Mastercraft
Basden Steel
Beaumont Ranch
Blue Cross Blue Shield
Burleson Business TV
Care Flite
Cash America
Centex Uniforms
Clay Shooter's Supply
Cellular World
Cockrell Enovation
Community Bank
Cresson Cattle Company
Davel Industries
Davis Motor Crane Services, Inc.
Diesel Dynamics
DMW Design
First Financial Bank
First National Bank of Burleson
Henry Coffeen Management
Holmes Murphy
Klund AC
KMP Graphics
LaSalle Corrections
Lucien Wright Insurance Services
MAAD H Ranch
Magee Architects
Maxfield Machines
Medstar Mobile Healthcare
Mike Carlson Motor Company
Motorola
Pinnacle Bank
Professional Safety Systems
ROMCO Equipment Co
Southwest Bank
Star Bank
Texas Health Huguley Hospital
The American National Bank of Texas
The Star Group
Triple C Tactical
United Healthcare
Unum Life Insurance
Vann Elli, Inc.
Wells Fargo
Wildcat Cranes
Wildgame Innovations
Woolard's Custom Jewelers
Wrangler Concrete Construction LP

LIFETIME MEMBERS

Bob Alford	Joe Hollarn
Billy Beacham	Dr Gene Howard
Andrew and Carol Lee Bennett	Craig and Cherie Hundley
Rocky Biggs	Rod Jones
Byron & Barbara Black	Keith & Diane Kelly
Marie Bomgardner	Jerry Payne
Charles Bosworth	Gary Marrs
Rocky Bransom	Jerry Moore
Burleson Business TV	David Murdoch
Pat and Melissa Chumley	Amber O'Rourke
Danny Cook – Cresson VFD	Mike Peacock
John and Vicki Copeland	Virginia May Proctor
Mike Culpepper	Steve Ramey
Bonnie Davis	Bob Russell
Tim Davis	Adam and Martha Russell
Joseph Denslow	Erin Russell
Mike and Susan Dorety	James and Ellen Russell
Howard Dudley	Barry Schlech
Patsy Dumas	Lowell Smith
Mike & Angie Erinakes	Lynn B. Stavinoha
Vinsen and Pam Faris	Johnny and Linda Swallow
Daniel Fielding	Chris Taylor
Gary Fowler	Randy and Rebecca Taylor
Rick Fuller	Floyd M. Walker
Troy Fuller	Jerry D. Webber
Marti George	Wayne West
Randal Goodwin	Betty West
Michael Guthrie	Mike White
Greg Harmon	Terri Witcher
Thomas Hazelwood	Albert Young

CLAY SHOOT OVERVIEW

100 SHOTS FOR THE CLAY SHOOT

The Chisholm Trail 100 Club held its third annual 100 Shots for the 100 Club First Annual Clay Shoot Competition. Planning was underway for over eight months led by volunteer, Lonnie Mears. The event was an enormous success, raising over \$85,000 for our Johnson County First Responders.



Famed Texas Rangers pitcher, Pudge Rodriguez, enjoying the festivities at the VIP Party.

The Clay Shoot consisted of two events grouped together – the VIP Party for Sponsors and the Competition itself. The VIP party was hosted by Board Member, Mike Erinakes at MAAD H Ranch. Auction totals from the Party are an estimated \$33,530.00. This year we even had an added surprise, famed Texas Rangers catcher Ivan “Pudge” Rodriguez attended the event, auctioning off a signed jersey and personal tour of the Ballpark.

Also making an appearance was Factory Beretta trick shooter, Travis Mears. The audience was treated to a live show featuring shooting fruits and vegetables upside down, backwards, from the hip and more!

This year's winners:

Highest Overall	David Bishop	98
First Responder HOA	Jon Eide	96
Ladies HOA	Stephanie Jones	64
Team	DMW Design	470
First Responder Team	Johnson County Sheriff's Office	365



The Clay Shoot Competition consisted of not only the tournament, but also silent and live auctions, raffles and gun grid boards. The totals for the Clay Shoot Competition are \$22,546.20.



Sponsorships for the events totaled over \$73,000.00. Sponsorships started at just \$250.00 for station sponsorship, Title Sponsorship was \$10,000.00. This year's event boasted over 70 sponsors!

The total net amount raised by this year's event was over \$85,000.00!

This year, like last year, our Board of Directors voted to induct all shooters and volunteers of the event as new members of the Club. As a result, Chisholm Trail 100 Club gained 301 members. We hope these new members return to our events year after year, continuously supporting the Chisholm Trail 100 Club.

Meet the Planning Committee

Event Director – Lonnie Mears

Event Coordinator – Niki Passmore

Event Planners – Mike Erinakes, Jerry Stringer, Keith Kelly, Steve Ramey, Melissa Zaborowski, Bonnie Davis, David Layman, Mike Peacock, Rick Fuller and Matt McWhorter



CHISHOLM TRAIL 100 CLUB, INC.
INCOME AND EXPENSE
AS OF JUNE 30, 2014

Income	2012	2013	2014
Direct Public Support	\$45,456.52	\$42,914.00	\$32,150.84
Other Income (Clay Shoot, Special Collections)	\$94,410.32	\$127,060.00	\$148,493.68
Cost of Goods Sold	\$0.00	\$531.00	\$0.00
Total Income	\$139,866.84	\$169,444.00	\$180,644.52
Expense			
Business Expenses (Clay Shoot, business supplies, etc.)	\$41,293.01	\$40,121.00	\$65,956.82
Fund Transfer Expense	\$0.00	\$301.00	\$0.00
Contract Services	\$4,803.23	\$1,004.00	\$780.60
Facilities and Equip...	\$1,230.00	\$1,092.00	\$180.00
Operations	\$4,426.59	\$6,330.00	\$5,280.41
Mission (Insurance & Disbursements)	\$34,955.20	\$63,122.00	\$35,151.67
Payroll Expenses	\$2,598.00	\$15,755.00	\$16,124.59
Travel and Meetings	\$1,152.11	\$115.00	\$1,840.83
Total Expense	\$90,458.14	\$127,840.00	\$125,314.92
Net Income	\$49,408.70	\$41,604.00	\$55,329.60

CHISHOLM TRAIL 100 CLUB, INC.
ASSETS AND LIABILITIES
AS OF JUNE 30, 2014

	<u>ASSETS</u>		
	<u>2012</u>	<u>2013</u>	<u>2014</u>
Checking/Savings			
First National Bank	\$87,170.90	\$107,189.00	\$67,716.64
Checking			
Total Checking/Savings	\$87,170.90	\$107,189.00	\$67,716.64
Accounts Receivable			
Accounts Receivable	\$16,449.99	\$15,457.00	\$13,778.25
Total Accounts	\$16,449.99	\$15,457.00	\$13,778.25
Receivable			
Total Current Assets	\$103,620.89	\$124,989.00	\$81,494.89
Fixed Assets			
Equipment	\$1,797.38	\$1,861.00	\$2,022.43
Total Fixed Assets	\$1,797.38	\$1,861.00	\$2,022.43
Other Assets			
Other Assets	\$15,000.00	\$30,000.00	\$120,500.00
(Endowment Fund)			
Total Other Assets	\$15,000.00	\$30,000.00	\$120,500.00
(Endowment)			
TOTAL ASSETS	\$120,418.27	\$156,850.00	\$204,017.32
<u>LIABILITIES & EQUITY</u>			
Accounts Payable	<u>2012</u>	<u>2013</u>	<u>2014</u>
Accounts Payable	\$97.61	\$0.00	\$0.00
Other Current Liabilities			
Payroll Liabilities	\$174.00	\$409.00	\$243.00
Total Liabilities	\$271.61	\$409.00	\$243.00
Equity			
Unrestricted Net Assets	\$76,737.96	\$114,137.00	\$148,444.72
Net Income	\$49,408.70	\$42,304.00	\$55,329.60
Total Equity	\$120,146.66	\$156,441.00	\$203,774.32
TOTAL LIABILITIES & EQUITY	\$120,418.27	\$156,850.00	\$204,017.32

**Sincere thanks to Cockrell Enovation for generously providing
print services to create this booklet.**



